



Instituto de Sistemas Complejos de Valparaíso -ISCV-

ISCV Visitor's Guide

Main Contact:

Beatriz Balmaceda
ISCV Executive Director
E-mail: [bbalmaceda\[at\]iscv.cl](mailto:bbalmaceda[at]iscv.cl)
Office telephone: + 56-32-233.92.17

ISCV Address:

Valparaíso Complex Systems Institute –ISCV–
Artillería N° 470, Cerro Artillería, Valparaíso, Chile.

Key data: Paseo 21 de Mayo, Museo Naval



www.iscv.cl



Instituto de Sistemas Complejos de Valparaíso -ISCV-





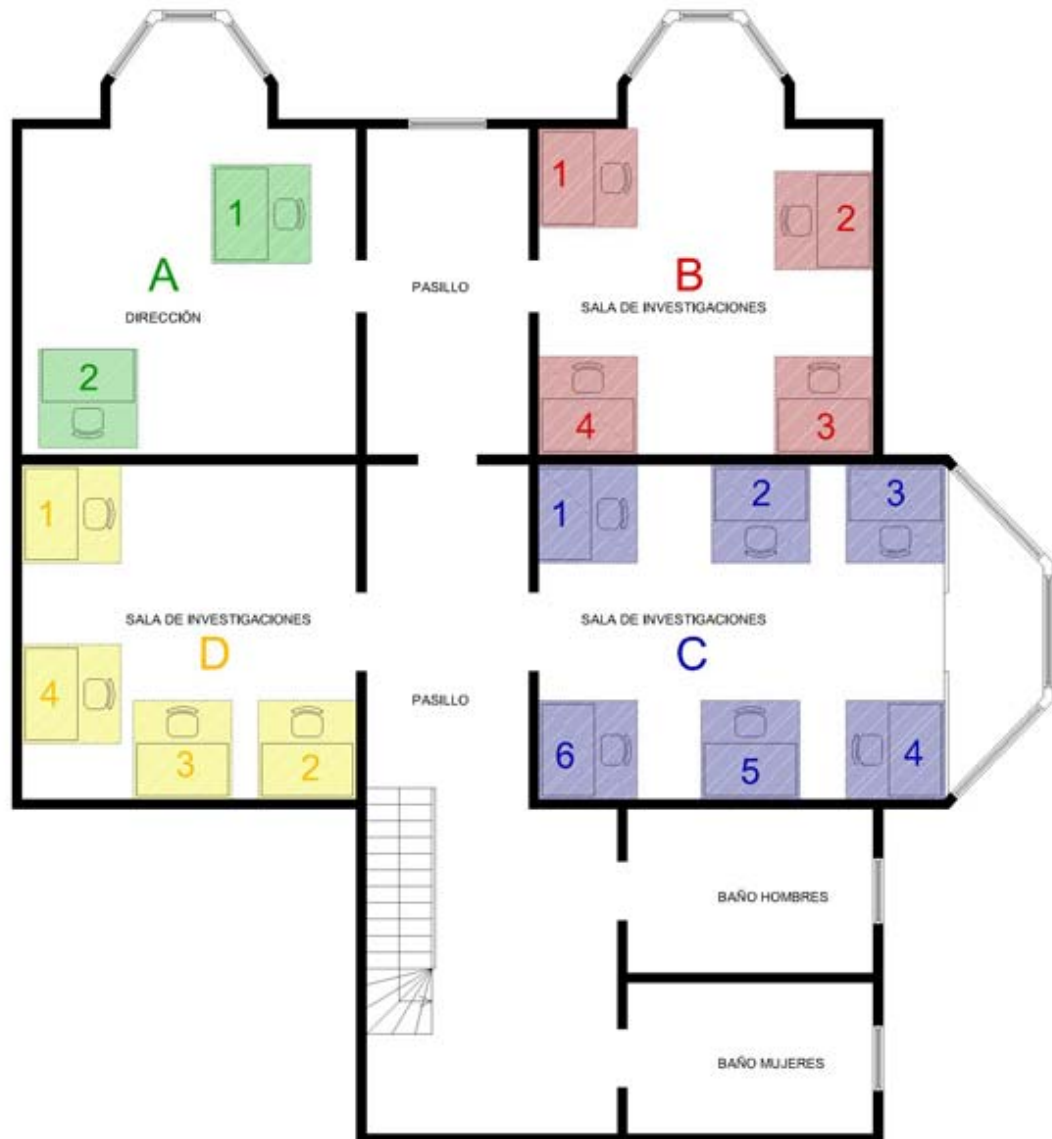
Offices: (For researchers) You will be given a desk assignment when you arrive. Most ISCV offices are shared with others so please be considerate of your office mates. ISCV has a couple of common areas for discussions. Space can be very limited at ISCV so please check with Beatriz Balmaceda (bbalmaceda[at]iscv.cl) before inviting a collaborator.

First floor





Second floor



Staff: Beatriz Balmaceda (bbalmaceda[at]iscv.cl) is available to assist you with administrative, housing and transport support during your visit.

Phones and Fax: Local telephone calls can be made from the reception near the entrance. When making long distance calls, please use your calling or credit card. Another alternative is to use **Skype** software which you will find in the ISCV desk computers available. There is no fax service at the ISCV; a scanner machine is available at the reception.



Office supplies: At your arrival, you will be given a folder with the general activities information along with an envelope containing the key of your drawers in your assigned desk (please don't lose it and remember to give it back at the reception when you depart). Your desk will have basic office supplies. If you need additional supplies or other items, see Beatriz Balmaceda at the reception.

Photocopying: Photocopy machine for ISCV-related work is located in the Reception. If you need assistance operating the machine, please ask a staff member.

Internet, Computers and Printers: A couple of shared desk computers will be available, but this can be very limited so please be considerate with your colleagues. WI-FI wireless connection is accessible at the ISCV with two access passwords depending on the floor you are located:

1st Floor: *****
2nd Floor: *****

* please ask this information at your arrival

Online access to the printer machine located at the reception can be reached through the computers as well as from the wireless connection; the printer name is: [Pc_1/hp Laser Jet 3020 PCL 5e](#) (in: [BEATRIZ en ISCVBeatriz \(Pc_1\)](#)). Before sending something for printing, please check the machine is loaded with enough paper).

AV Equipment

ISCV has transparency and Data Show projectors, as well as screens and white boards on site. We do have wall space for poster sessions.

Lunch: ISCV doesn't provide lunches, but there is an attractive offer of good and nice restaurants in Valparaíso:
(Next page)



Valparaiso Restaurant alternatives

Restaurantes Valparaíso

Nombre	Direcciones	Teléfonos	tipo de comida / observaciones	URL
Area Code: 32				
Apolo 77	Pasaje Apolo 77 Cerro Alegre	2734862	pescados y mariscos	http://www.restauranteapolo77.cl/
8 y MedioArte	Almirante Montt, 642 Cerro Alegre	2493224	cine arte y tapas españolas	www.8ymedio.cl
Allegretto Pizzas	Pilcomayo 529, C° Concepción	2968839	Pizzas	http://www.allegretto.cl/restaurant.htm
Bar Inglés	Dirección: Cochrane 851	2214625	Chilena (muy turístico)	
Bote Salvavidas	Muelle Prat s/n ,P.2	2251477	Pescados y mariscos	
Café con Letras	Almirante Montt 316 Cerro Concepción	2235480	Café y Librería	
Café del Poeta	Plaza Anibal Pinto 1181	2228897	Comida naturista, pescados y mariscos	
Café Journal Valpo. Rest.	Cochrane 81	2596760		
Café Turri Restaurante	Templeman, 147 C. Alegre	225 2091	Internacional	http://www.turri.cl/
Café Vinilo	Almirante Montt 448, Cerro Alegre	2230665	Pastas	
Caleta El Membrillo	Avenida Altamirano 1567	2283627	pescados y mariscos chilena	
Carusso	Av. Cumming 201, Cerro Cárcel	2594039	pescados y mariscos / Peruana	
Casino Social J.Cruz	Pasaje Condell 1466 -11	2250319	Chorrillanas (típico Valpo.)	
Cinzano	Plaza Anibal Pinto 1182	2213043	Típica Chilena (muy turístico)	
Coco Loco	Blanco 1781 P.21-22	2227614	Típica Chilena y francesa(muy linda vista)	http://www.cocolocogiratorio.cl/
Desayunador	Almirante Montt 399	2755735	Café, tetería, desayunos y onces	http://www.eldesayunador.cl/
Filou de Montpellier	Almirante Montt 382, Cerro Alegre	2224663	Francesa	http://www.lefilou.8k.com/
Gato Tuerto Restaurant	Héctor Calvo 205, Cerro Bellavista	2220867	Comida Oriental, francesa, carnes	http://gatotuerto.res.cl/
Hamburg	Libertador B. O'Higgins 1274	2597037	Alemana	
Kuukai	Molina 328 Plaza Victoria	2219000	Sushi japonés	
La Mangiata	Rodríguez 538	2232473	Italiana	
Los Portefios Marisquería	Valdivia 169	2252511	pescados y mariscos chilena	
Pasta e Vino	Templeman 352, Cerro Concepción	2496187	Italiana (reservar con anticipación)	
Pau San - Valparaíso	Independencia 1760	2255619	China	
Pekín	Pudeto 422	2254387	China	
Poblenou	Urriola 476, Cerro Alegre	2495245	Café Bar Tapas	http://www.poblenou.cl/
Portofino	Bellamar 30 (Recreo)	2629939	Pescados y Mariscos, pastas	http://www.portofino.cl/
Proa al Cañaveral	Avenida Errazuriz 304	2214967	Chilena	
Samsara	Almirante Montt 427	2592492	Tailandesa	www.samsararestaurante.cl
Telepizza	Esmeralda 1077	2212020	Pizzas	
Terra Nostra	Esmeralda 987	2213080	Pescados, marscos, pastas	
Victoria	Salvador Donoso 1540	2459387	Chilena	

Coffee and Beverages: Self service coffee, tea, beverages and cookies are available in the mini dining room next to the kitchen. Please keep care in throwing away your used cups in the trash cans around the Institute.



ISCV Campus Facilities

Entrance Door: The entrance door is usually open from 8:45 a.m. to 6:30 pm weekdays. If you need access during other times, please contact Beatriz Balmaceda (bbalmaceda[at]iscv.cl)

Library: ISCV maintains little but ever growing library. If there is a book you need from our modest collection, please ask Beatriz Balmaceda at the Reception. ISCV appreciates any donations of your articles or books to our library.

Conference Rooms: Two main conference rooms are available for research-related meetings and Seminars. If you wish to reserve any of these rooms please contact Beatriz Balmaceda (bbalmaceda[at]iscv.cl)

ISCV Scientific Interaction

ISCV encourages its researchers to take advantage of our unique, collaborative scientific environment. Multidisciplinary efforts, taking intellectual risks outside the traditional scientific boundaries, are what we expect.

Please introduce yourself to other participants and staff, and take advantage of the opportunities (seminars, informal talks, etc.) to discuss common research interests. We urge you to participate in every scheduled common activity while you are visiting the ISCV.

Please keep your credential always visible as for to facilitate the interaction (this credential will be given to you at your arrival).

You should also consider giving a research talk early in your visit so that other researchers can learn about your interests. You should contact the coordinator of the activity you were invited for.

Any change on the program while your visit or any important message will be notified to your e-mail, please check it regularly.

Please be sure to include the Valparaíso Complex Systems Institute -ISCV- in the acknowledgment section of any published materials generated as a result of your stay at ISCV.



Valparaíso City Services

Useful telephones

Area Code: 32

<u>Taxis:</u>	Plaza Echaurren:	2213265
	Plaza Sotomayor:	2214706
	Bus Terminal (Pedro Montt Street):	2222960

Emergencies:

Service	Telephone
Ambulancia	131
Bomberos	132
Carabineros	133
Investigaciones	134
Servicio de Búsqueda y Rescate Marítimo	137
Rescate Aéreo	138
Informaciones Policiales	139
Informaciones Municipalidad de Valparaíso	800-322032

Tourist information

- Centro de Informaciones Muelle Prat: Timetable: 10:00 a 14:00 - 15:00 a 18:00 Hrs (32) 2939489
- Centro de Informaciones Rodoviario: Bus Terminal in front of the Congress; Timetable Tuesday to Sunday: 10:00 a 14:00 - 15:00 a 18:00 Hrs (32) 2939669

Money Exchange

Name	Address	Telephone
Inter	Sotomayor 11 local 8	32-2255892
Exprinter	Prat 895	32-2217010
Bureau De Change	Cochrane 828	32-2220737



Rent a Car

Name	Address	Telephone
Colón Rent A Car	Colón 2581, Esquina Morris	32-2256529
Meneses y Díaz	Independencia 2761	32-2594677
Rent a Car Rosselot	Victoria 3013	32-2352365
Mach Rent A Car	Las Heras 428	32-2351079

Tourist agencies

Name	Address	Telephone	E-Mail	Web Page
Turismo Nuevo Mundo	Blanco 951 Of. 102	32-2253817	contacto@nuevomundo.cl	www.turismonuevomundo.cl
Bohemia Tour	Esmeralda 1074 Of. 804	32-2469382	info@bohemiatur.cl	www.bohemiatur.cl
Emporium	Cochrane 667 Of. 501	32-2215053	mariateresagarcia@terra.cl	www.mariateresagarcia.terra.cl
Enlace Turístico	Av. P. Montt, Rodoviario	32-2939669	info@enlaceturistico.cl	www.enlaceturistico.cl
Puro Chile Turismo	Av. Yervas Buenas 891 Of. 8	32-2226499	paulina@purochileturismo.cl	www.purochileturismo.cl
Turismo Bahía de Quintil	Av. Portales 551 Depto. 42	09/8711449/ 32-2230126	info@bahiadequintil.cl	www.bahiadequintil.cl
Turismo Oroco	Blanco 11299 Of. 4	32-2255214	turismo@oroco.cl	www.oroco.cl
Ruta Valparaíso	No Registra	32-2911972	info@rutavalparaiso.cl	www.rutavalparaiso.cl



Consulates in Valparaíso

Country	Address	Telephone
Alemania	Blanco 1215, Of. 1102	32-2256749
Argentina	Cochrane 867	32-2213691 32-2217419
Bélgica	Prat 827, piso 12	32-2213494
Brasil	Blanco 951	32-2217856
Dinamarca	Errázuriz 940	32-2268379
España	Yungay 1731, 2º piso	32-2214466
Gran Bretaña	Manuel Blanco Encalada 1199, 5º piso	32-2213063
Italia	Prat 827, Of. 702	32-2253177
Panamá	Cochrane 813 Of. 307	32-2213592
Perú	Errázuriz 1178 Of. 71	32-2253403 32-2217289
Suecia	Errázuriz 940	32-2250305

Información para extranjeros que ingresan a Chile

<http://www.conicyt.cl/movilidad/html/consejopractico.html>

Portal Ciudad de Valparaíso

<http://www.ciudaddevalparaiso.cl/inicio/intro.php>





Housing alternatives

Nombre	Dirección	Teléfonos	Web / E-mail
Casa Hostal 199	Artillería 199 C° Artillería	32- 2369054 09 - 8847998	http://www.artilleria199.cl/home.html artilleria199@gmail.com
Hostal Portobello B&B	Artillería 115 C° Artillería	32- 2118834 08- 5153707	http://www.hostalportobello.cl/ contacto@hostalportobello.cl
Hostal Caracol	Hector Calvo 371 C° Bellavista	32- 2395817	http://www.hostalcaracol.cl/ hostalcaracol@gmail.com
Casa/Hostal de Elena de Molina	Subida Artillería 120 C° Artillería	32-2283789	<i>Vecina ISCV</i>
Hostal La Colombina	Calle Abtao 575 C° Concepción	32-2234980 32-2236254	http://www.lacolombina.cl/hostal/ info@lacolombina.cl
Hostal Luna Sonrisa Cerro Alegre	Templeman 833 C° Alegre	32-2734117 32-2227868	http://www.lunasonrisa.cl/ Janak@vtr.net
Deptos. Chantal de Rementería	Pasaje Pierre Loti 65 C° Concepción	32-2257067	chantalderementeria@hotmail.com
Hotel Patrimonial "Casa Thomas Somerscales" (Hotel Boutique)	San Enrique 446 C° Alegre	32-2331006 32-2331379	www.hotelsomerscales.cl info@hotelsomerscales.cl
Casa Aventura	Pasaje Galvez 11 C° Concepción	32-2755963	http://www.casaventura.cl/ info@casaventura.cl
Casa Mirador	Abtao 457 C° Concepción	32-2257098	http://www.hostalcasamirador.cl/
Hospedaje la Bicyclette	Almirante Montt 213 C° Alegre	32-2222415	http://www.bicyclette.cl/ gilles_amari@hotmail.com
Casa Latina	Papudo 462 C° Concepción	32-2494622	casalatina@bbvalparaiso.cl
Casa Carrasco	Abtao 668 C° Concepción	32-2210737	
Hotel Ultramar	Tomás Pérez 173 Cerro Cárcel	32- 2210000	http://www.hotelultramar.cl/ reservas@hotelultramar.cl
Hotel Brighton	Paseo Atkinson 151 Cerro Concepción	32-2223513	http://www.brighton.cl/
Bed & Breakfast La Nona	Calle Galos N° 660 Cerro Alegre	32-2495706	http://www.bbblanona.com/ info@bbblanona.com
Hotel Gala	Arlegui 273 Viña del Mar	32 2321500	http://www.galahotel.cl/index_sp.php galahotel@galahotel.cl
Hostal Pilcomayo	Pilcomayo 491 C° Concepción	32- 2251075	http://www.hostalpilcomayo.cl/ hostalpilcomayo@hotmail.com
Hotel Casa Higuera (Hotel Boutique)	Calle Higuera 133 Cerro Alegre	32-249 7900 2 -657 3950	http://www.hotelcasahiguera.cl/ info@casahiguera.cl
Zero Hotel (Hotel Boutique)	Lautaro Rosas 343 Cerro Alegre	32 -211 3113	http://www.zerohotel.com escaparse@zerohotel.com
Hotel Gervasoni (Hotel Boutique)	Paseo Gervasoni N° 1 Cerro Concepción	32- 2239236 Cel: 08900403	http://www.hotelgervasoni.com/ contactos@hotelgervasoni.com
Hotel Manoir Atkinson	Paseo Atkinson 165 Cerro Concepción	32- 2351313	http://www.hotelatkinson.cl/ reservas@hotelatkinson.cl
Hotel Puerto Natura (Hotel y Spa)	Héctor Calvo 850 Cerro Bellavista	32- 2112730 32- 2224405	http://www.puertonatura.cl/ reservas@puertonatura.cl
Hotel San Martín	Av. San Martín 667 Viña del Mar	32- 2689191	http://www.hotelsanmartin.cl/old/index .htm reservas@hotelsanmartin.cl



General Information

Visa Information

Citizens of most countries of Europe and North America do not need a visa to enter Chile. Upon entry you will only have to present a valid passport and tourist card (given to you by the flight attendant or your travel agent).

To confirm the information on visa requirements for your particular country, please contact the nearest Chilean Embassy or Consulate. A complete list of Chilean foreign missions can be obtained at www.minrel.gov.cl (once on the website go to the top right corner to Misiones en Exterior where you will find the necessary information organized by region).

In case citizens of your country require a tourist visa to enter Chile, the procedure is usually simple and takes in average about 7 business days. You will normally be asked to fill out a visa application form (obtained from the Chilean Embassy or Consulate), to present a valid passport, a round trip ticket, a proof of financial resources (usually a copy of the international credit card) and a passport size photo. In some cases you may be required to present a letter of invitation from somebody in Chile. Should this be the case, please contact the ISCV administration in advance, and such a letter will be provided to you.

Reciprocity tax

Please note that upon arrival, citizens of Australia, Canada, the United States and Mexico must pay a reciprocity tax before passing through the Immigration and Passport Control. This tax is payable in cash or by credit card. Values are as follows:

COUNTRY	TAX
Australia	USD \$ 56
Canada	USD \$ 132
United States	USD \$ 100
Mexico	USD \$ 15

If you have any questions regarding this tax, please contact the airport Cash Desk at (56-2) 690-1063.

A Snapshot of Chile

Around 16 million inhabitants live on the Chilean territory, which is 175 km wide and over 4300 km long. The population of Chile, although quite homogeneous in the Central Region, is composed of many ethnic groups such as the Aymaras, the Mapuches, and the Easter Islanders. The official language is Spanish; the dominant religion is Catholicism and the currency – the Chilean Peso - is valued at around CL\$530 per 1 US dollar.

Chile, often regarded as one of South America's safest and most economically and politically stable countries, has experienced a dramatic increase in tourism over the last few years. Chile is a photographer's and traveler's paradise for all its colors and shapes. From north to south the landscape changes dramatically, and so do the colors. Lunar landscapes, deserts, active geysers and salt lakes can be found in the North; while densely forested areas, waterfalls, ice fields, glaciers, fjords and lakes can be found in the South. In the central region, in one day you can go trekking or skiing in the mountains and then enjoy delicious seafood by the sea.



Weather in Chile

Valparaiso enjoys a Mediterranean climate. In winter (June-August), the daytime temperature is usually around 15°C (going down to around 7°C at night). The temperature is usually lower at this time of the year in Santiago.

Banking and ATM Availability

ATMs are now very common in Chile. Per-day withdrawal limits are usually around US\$350. Banks are open to public Monday through Friday, from 9.00 to 14:00.

Electricity

Chile's electricity standard is 220 volts/50Hz. Electrical sockets have two openings for tubular pins, not flat prongs, so you may need a plug adapter.

Tipping

Usually a 10% tip is given in bars and restaurants. In hotels tipping is left to the guests' discretion. Taxi drivers are not tipped.

Safety and Emergencies

The principal concern for visitors of Valparaiso are pickpockets. We recommend that people carry their backpacks in front of them when in crowded places. As in most big cities, some areas of Valparaiso should also be avoided at night.

Time Zone

The time zone in winter is GMT -4 hours; in summer it is GMT -3 hours

|||||||WELCOME TO VALPARAÍSO!!!!!!!!!!

